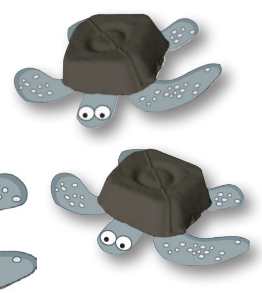


Adopt-a-Turtle

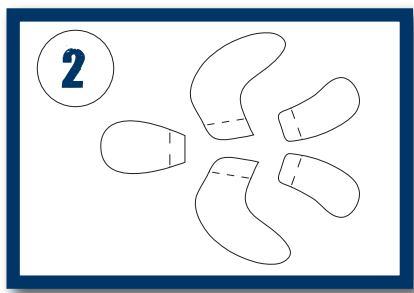
Make your own turtle hatchling

- You will need...**
- One empty egg box
 - Scissors
 - Glue
 - Paints/coloured pens

You can make a turtle hatchling like me out of an egg box!



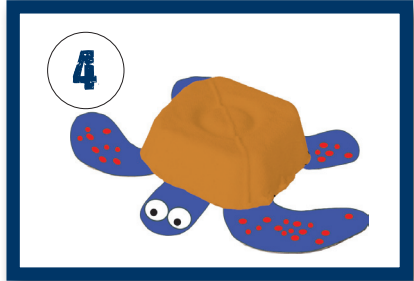
1 Cut the top off one egg compartment to make your shell.



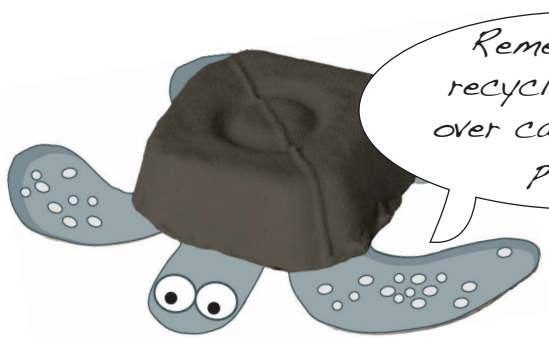
2 Use the template below and cut out two long front flippers, two short back flippers and a head.



3 Glue the head and flippers on to the shell to complete your hatchling.



4 Get creative and decorate your hatchling however you like. You could use paint, pens or even glitter!



Remember to recycle any left over cardboard or paper.

Cut out template

Carefully cut out this template, please ask an adult for help with this part, and be very careful when using scissors.

Fold upwards along the dotted line, glue the edge and attach to the egg box body as shown in picture three.

