

# STOP THE BLOCK



**BE  
THE  
WAVE**

MARINE  
CONSERVATION  
SOCIETY



cadwch keep  
gymru'n wales  
daclus tidy



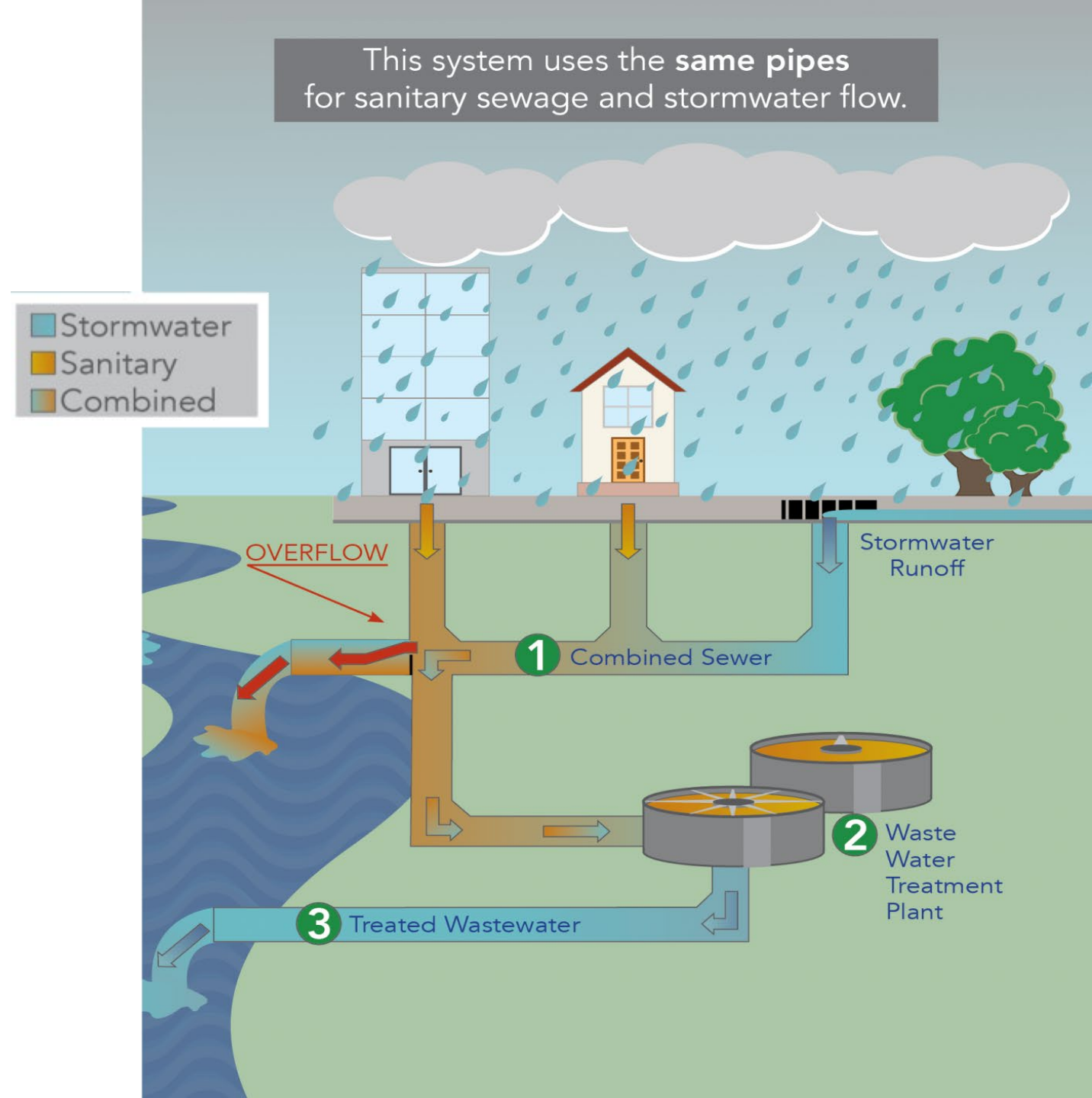
# Lesson Objectives

- Explain the difference between a combined and a separate sewage system, the journey of sewage through these and the environmental impact.
- Identify what should not be flushed down the toilet and the reasons why
- Take action to solve these problems and change people's behaviour
- Apply knowledge of marine litter sources to everyday life through #BeTheWave actions and Eco-Schools programme

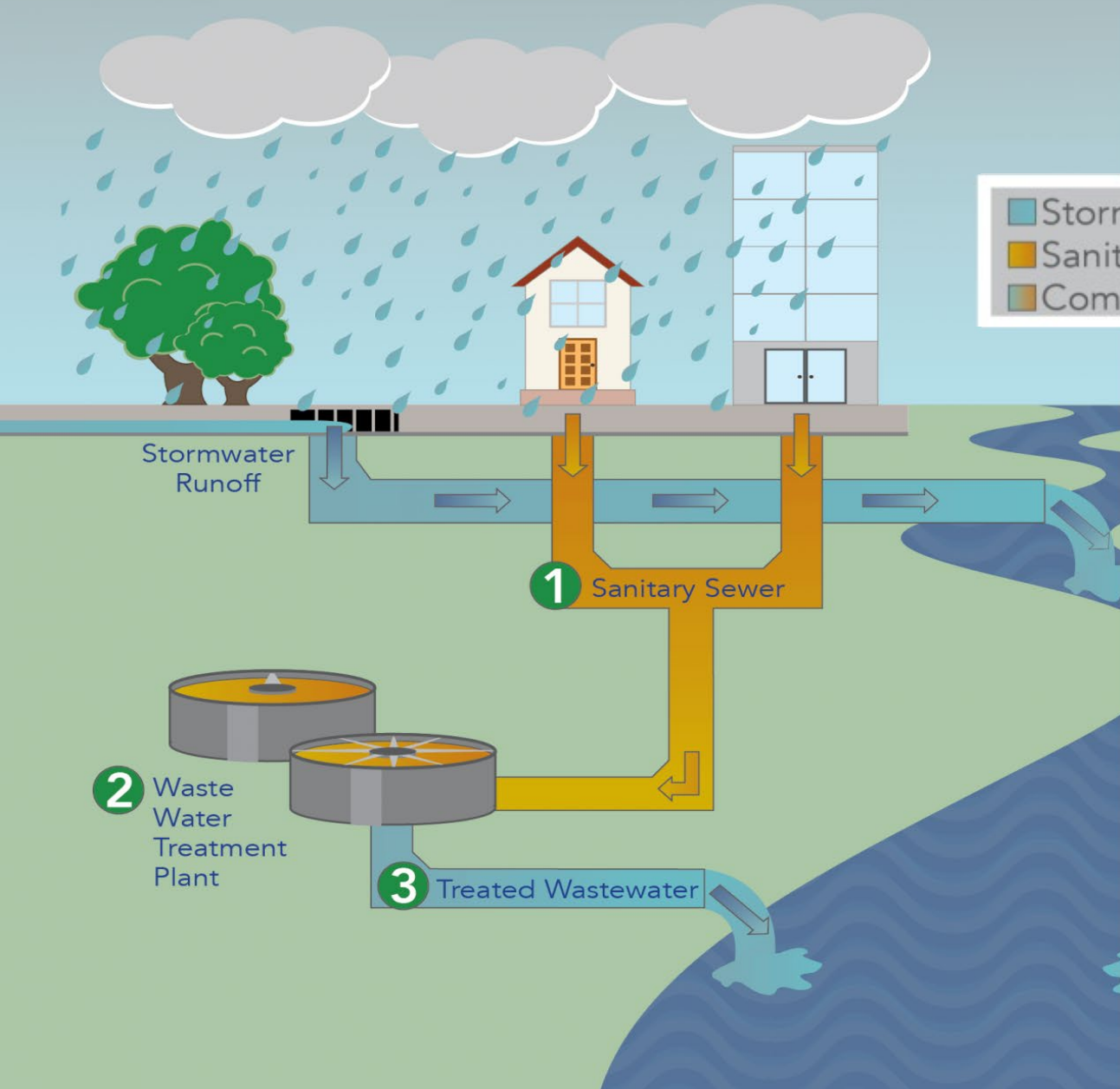




# Combined Sewage System

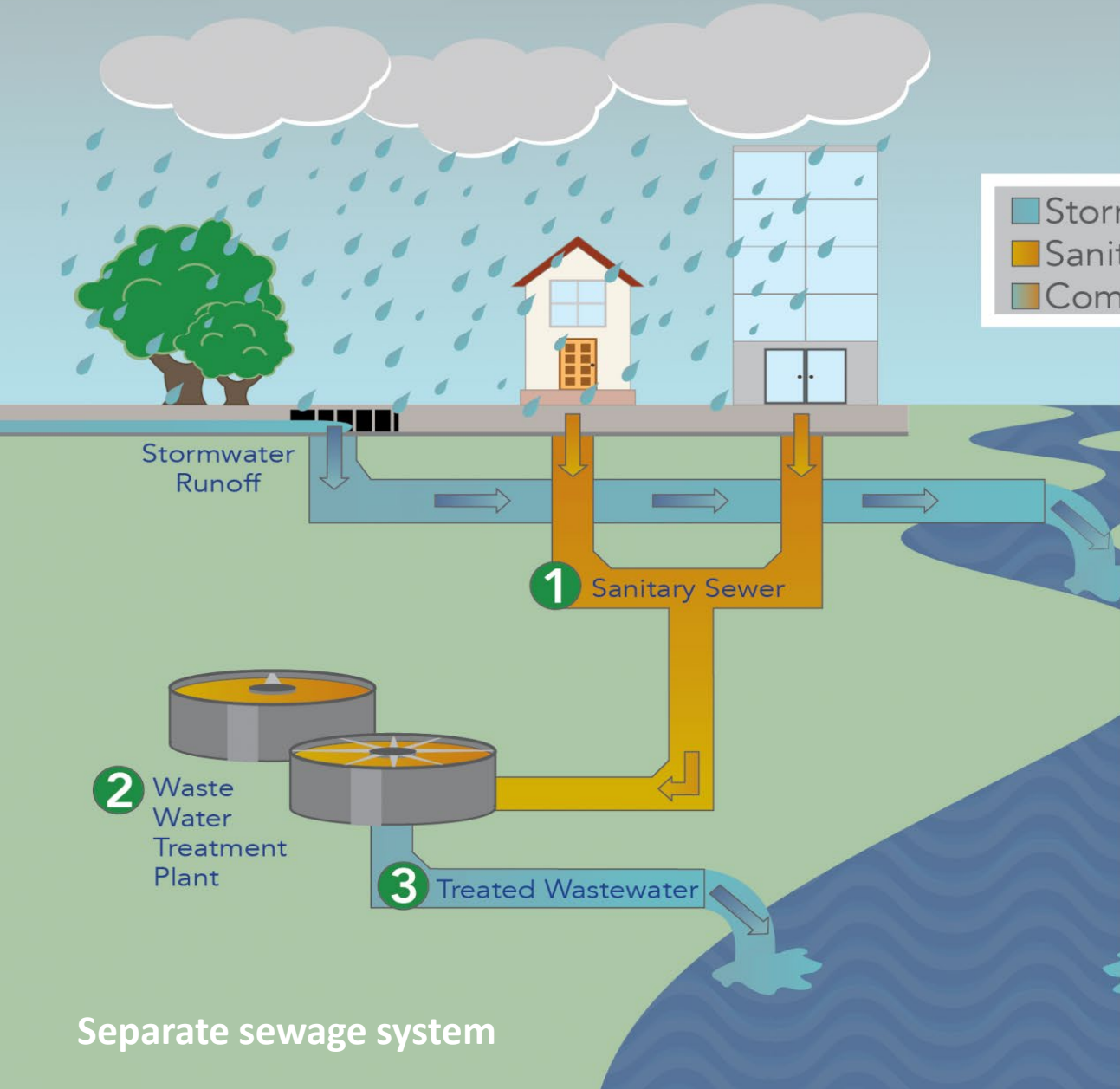


This system uses **separate pipes** for sanitary sewage and stormwater flow.

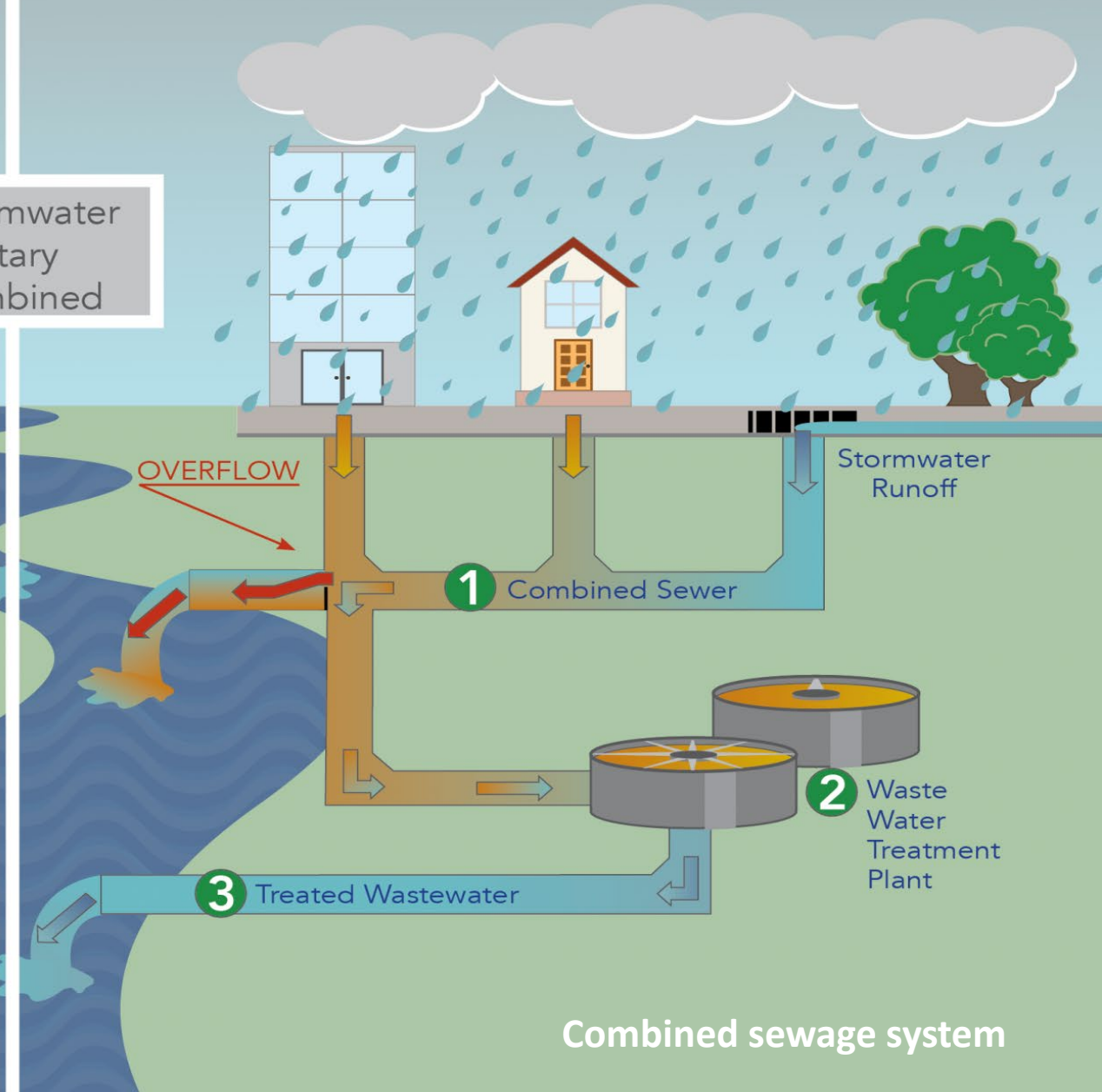


# Separate Sewage System

This system uses **separate pipes** for sanitary sewage and stormwater flow.



This system uses the **same pipes** for sanitary sewage and stormwater flow.



Separate sewerage system

Combined sewerage system



WATER  
F. JACKSON  
MICHOLIN FOUNDRY  
CARDIFF

CARDIFF  
SEWERS





THE SEA STARTS HERE



PLEASE DON'T LITTER





ONLY WATER







# FROM BATHROOM TO BEACH

## THE JOURNEY OF FLUSHED PLASTIC



PRODUCTS ARE FLUSHED

ANYTHING OTHER THAN PEE,  
PAPER OR POO BLOCKS  
OUR DRAIN SYSTEM



SEWER BLOCKAGES AND  
HEAVY RAINFALL CAN  
LEAD TO OVERFLOW



SO FLUSHED ITEMS END  
UP LITTERING OUR RIVERS  
AND BEACHES

Keep our seas plastic-free, only flush paper, poo and peel!











Wet wipes block sewer in Ammanford







Wet wipes labelled as flushable caused this blockage in Pontyberem





Fatberg blocking a sewer in Cardiff



Wet wipes flushed in  
Maesteg resulted in this  
local environment  
pollution.







This mass of wipes was cleared from a sewer in Tremadog.

Unfortunately, it had already caused river pollution.



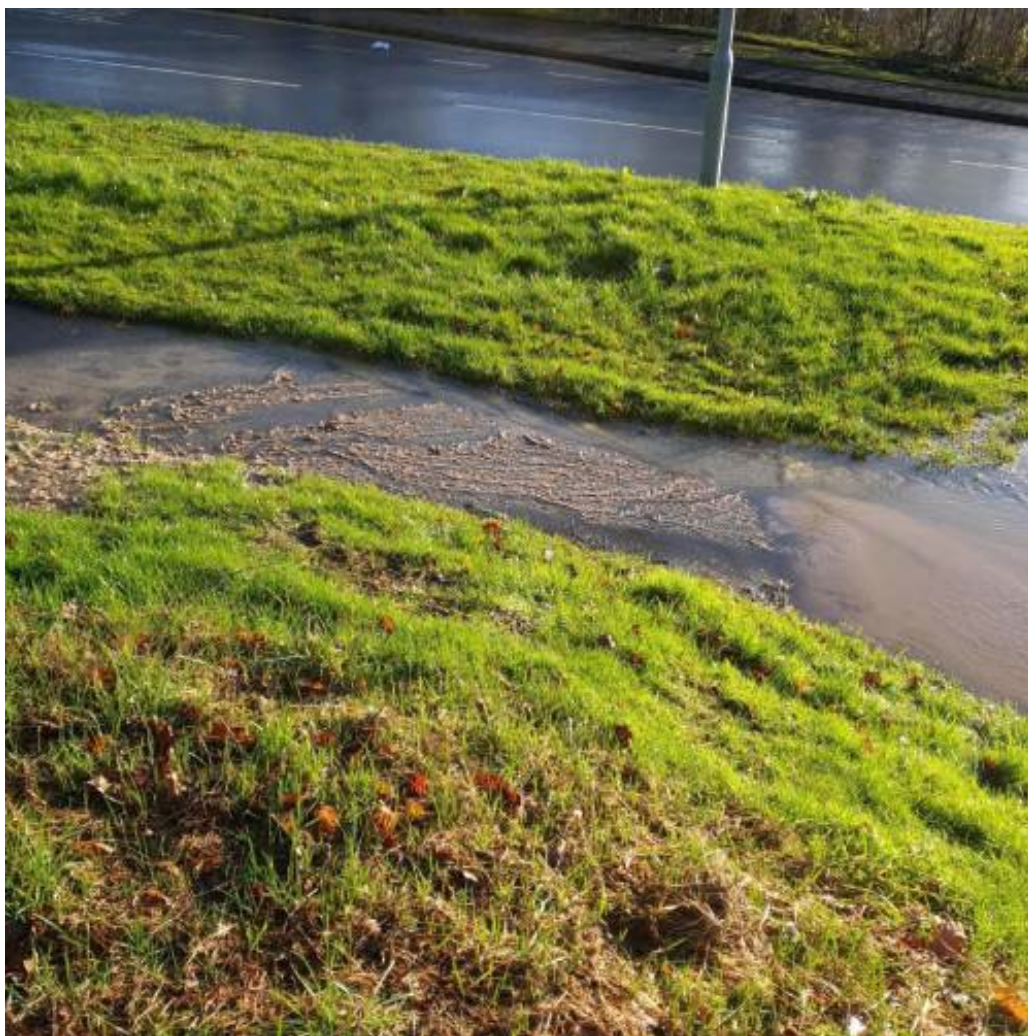


This huge mass of wet wipes was removed from a sewer in Riverside, Cardiff.

It filled 10 bin bags and took crews hours to clear.







Wet wipes blocked a sewer near a comprehensive school in Cwmbran and caused this environmental pollution.





Sewer pollution from a residential area in Haverfordwest.

It was caused by wet wipes blocking a sewer pipe.





# BeTheWave

**BE  
THE  
WAVE**



# #BeTheWave



## School

- Organise regular litter picks of the school grounds
- Put a campaign into action – work together and use the resources you have designed to start up the campaign in school

## Individual

- Act on what you have learnt today – be sure to only flush the 3P's. Throw all wipes, sanitary items, cotton buds and nappies away in the bin.
- Don't litter! And highlight to others that litter can end up in rivers and seas and been very harmful to the environment.
- Sign up to organised campaigns such as Unblocktober awareness campaign, Surfers Against Sewage #EndSewagePollution. Recylenow and pledge to #StopFlushingWipes with the Rivers Trust

