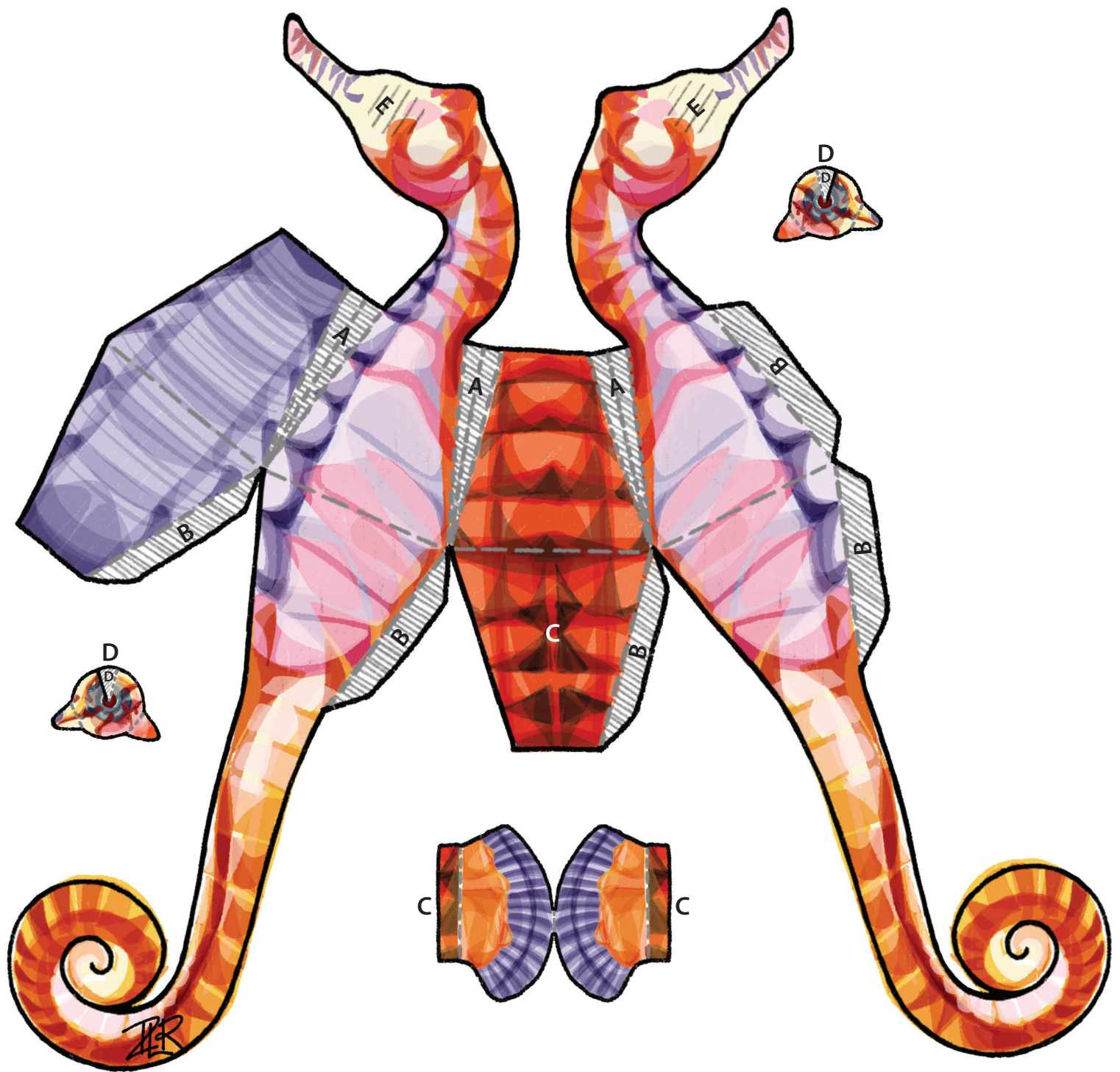


Seahorse

For instructions on how to put together, see separate sheet



illustrations by Imogen Robertson

© Marine Conservation Society (MCS) 2018. All Rights Reserved.
This page may not be photocopied and reproduced for use, for all other uses seek permission from MCS.

Pop up Seahorse instructions

We advise that children should be supervised when using scissors and glue

1. Read through all the instructions before you start.
2. Carefully cut out each part of the seahorse, and cut along all bold black lines.
3. **BODY**: fold between upper body segments 'A' along the 3 dashed grey lines and glue shut. Glue tabs 'B' to the underneath neighbouring segments to complete 3D body.
4. **HEAD**: glue together the two sides of the head, taking care to line them up.
5. **FIN**: crease tabs 'C' toward you, fold fin in half and glue together. Orientated as shown, glue fin tabs 'C' onto lower back marked 'C'.
6. **TAIL**: carefully line up the two sides of the tail and glue together.
7. **EYES**: cut the bold black line on each and overlap the edge onto hashed area 'D' and glue down to make a cone shape. Glue the underneath of the eye tabs and place the whole eye over hashed area marked 'E' on the head. Press down glued tabs to hold in place.
8. Optional: poke a hole in the top of your seahorse, attach some string, and hang as a decoration.

